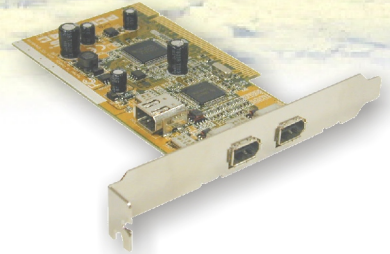


IEEE 1394 Card Installation

for use with 1690 -Series
Logic Analyzers



Agilent Technologies



Install the IEEE 1394 Card



Find the Agilent E5851A IEEE 1394 Connection Kit and install the **IEEE 1394 PCI card** in any available slot in your desktop PC.



IEEE 1394
Card Box

Ferrite



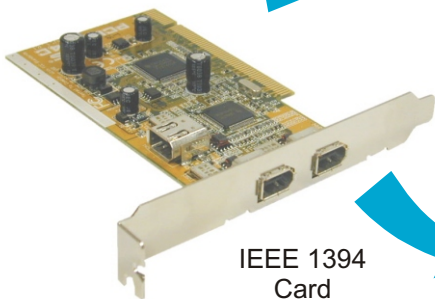
6 to 4 pin
Cable
(Not Used)



6 to 6 pin
Cable



IEEE 1394 Card
Software
(Not Used)



IEEE 1394
Card

WARNING

Be sure to power down your PC and disconnect the power cable before installing the IEEE 1394 card.

Refer to your PC's documentation for specific installation instructions.

Your PC System Requirements:
Processor: 500MHz minimum, Intel Celeron, AMD K6-II or better

RAM: 128M
Operating System: **Windows 2000 Professional** installed

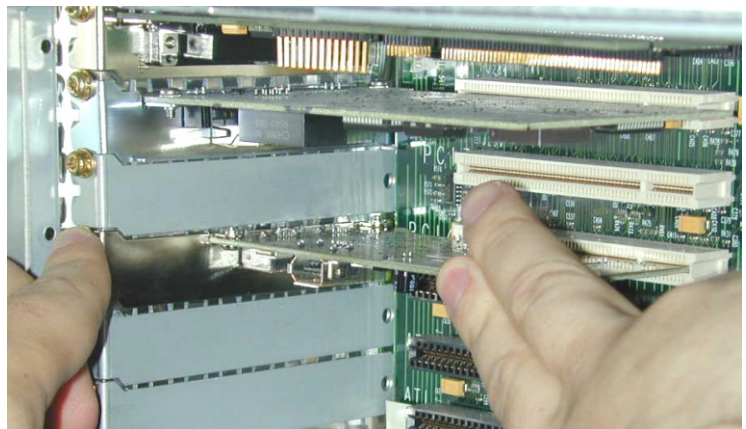
Free Hard Disk Space: 100M minimum

Your PC



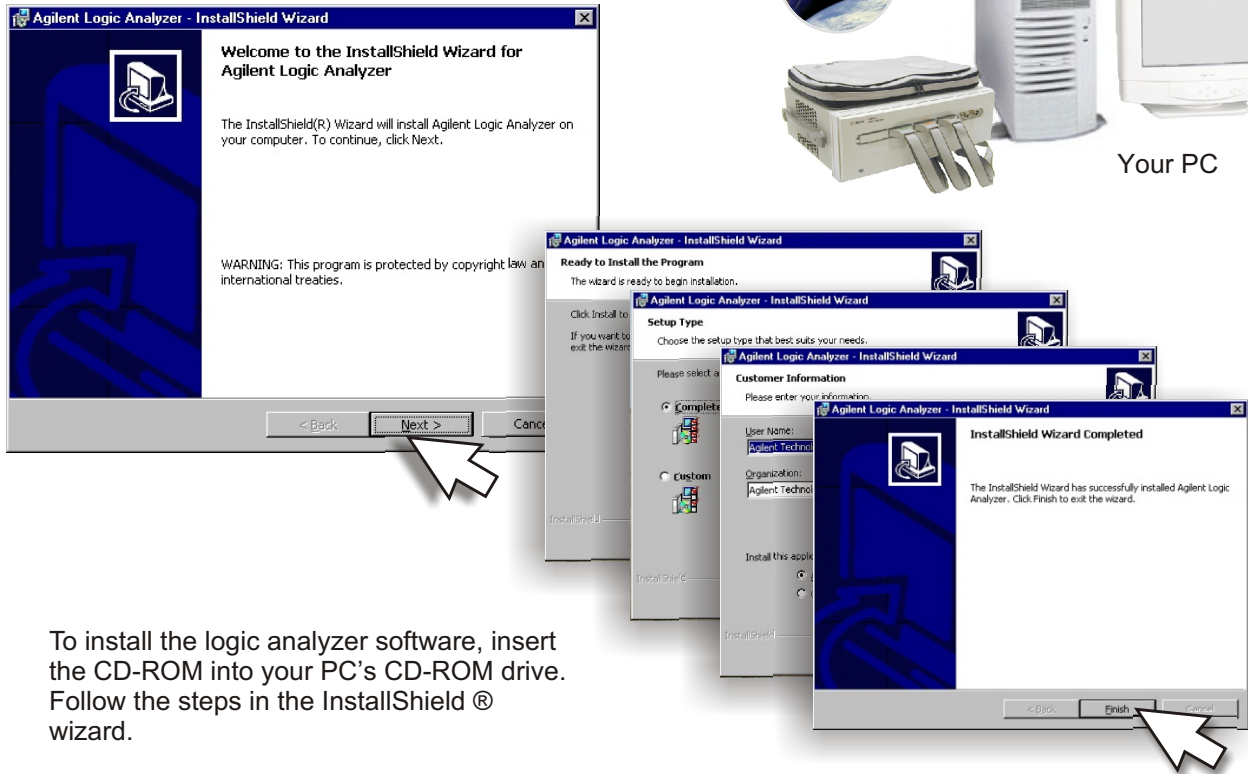
Note!

Windows 2000 will not prompt you if the IEEE 1394 card is not properly installed.



Software Installation and Upgrades

B Install the *Agilent 1690-Series logic analyzer software*.



To install the logic analyzer software, insert the CD-ROM into your PC's CD-ROM drive. Follow the steps in the InstallShield® wizard.

1690-Series Host Connection

C Snap the Ferrite on the 6 to 6 pin cable and connect the cable between the PC and the logic analyzer.

